

MASAAR RESIDENCE

a place of endless possibilities





JUMEIRAH VILLAGE

a place of endless possibilities

Jumeirah village is located in the heart of Dubai's most exciting place to live-Jumeirah. Whether it's pristine beaches, exciting sports or unprecedented shopping and hospitality that redefine this destination, the fastest growing city in the world offers an incomparable quality of life.

With jumeirah village's ideal location, between Sheikh Zayed Road and Emirates Road, Dubai and everything on it offers is mere minutes away.



JUMEIRAH VILLAGE

An inspired place to call home

A community of friends and neighbors, a blend of convenience and comfort. Open green areas and tranquil water features that connect a variety of villages.

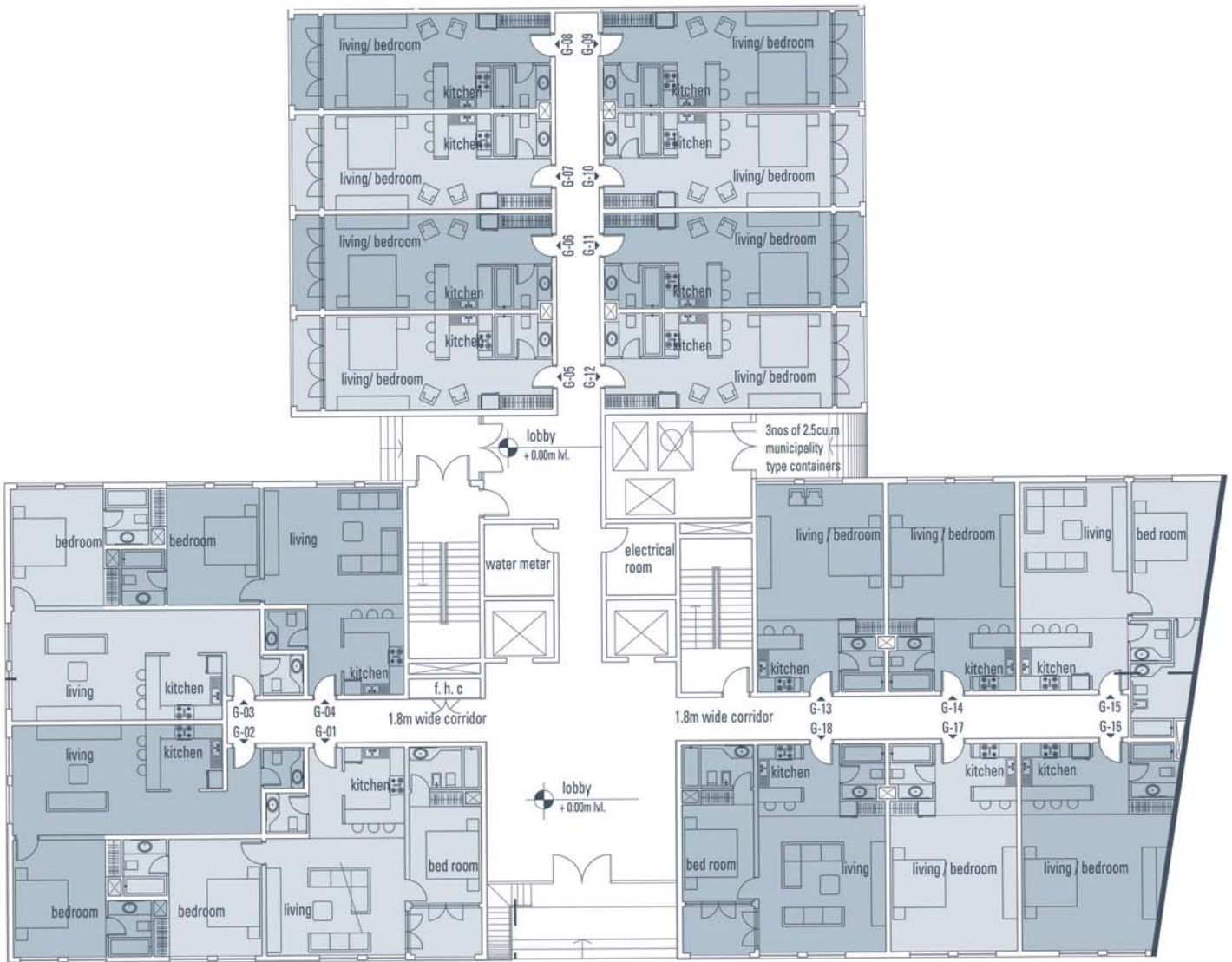
Jumeirah Village is all this and more—a new residential development in the heart of Dubai's most desirable district that captures the feeling of a warm, friendly neighborhood, with everything residents need to feel right at home.

From the vibrant green space of Serenity Village, the sparkling vistas of Waterscape Village and Wadi Village, and the expansive plantings of Garden Village, this is a place that invites residents to be part of a self-sustained, diverse community where everything they need, as well as everything they enjoy, is well within reach.



GROUND FLOOR

layout



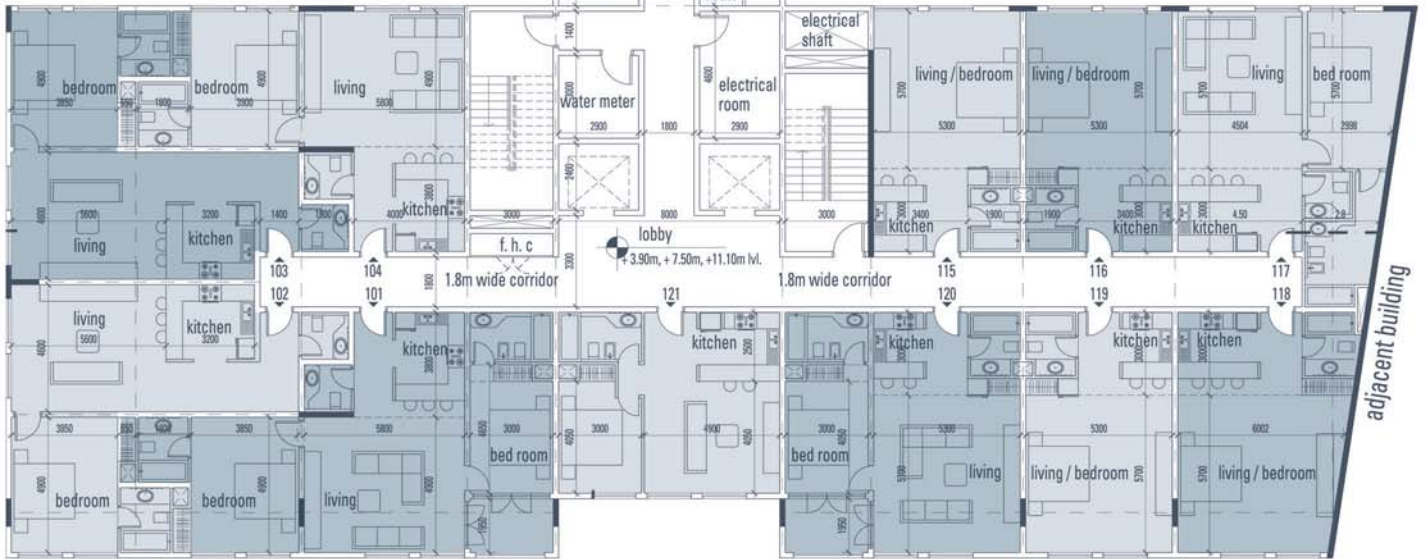
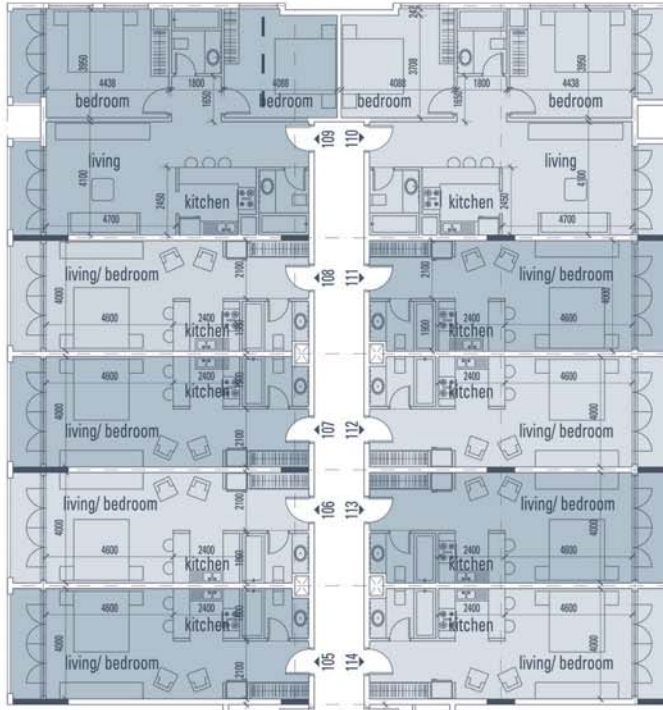
TOTAL FLOOR AREA

SQ.M 3,110.13

SQ.FT 33,477.13

1st, 2nd, 3rd FLOOR

layout



TOTAL FLOOR AREA

SQ.M 1,603.73

SQ.FT 17,256.13



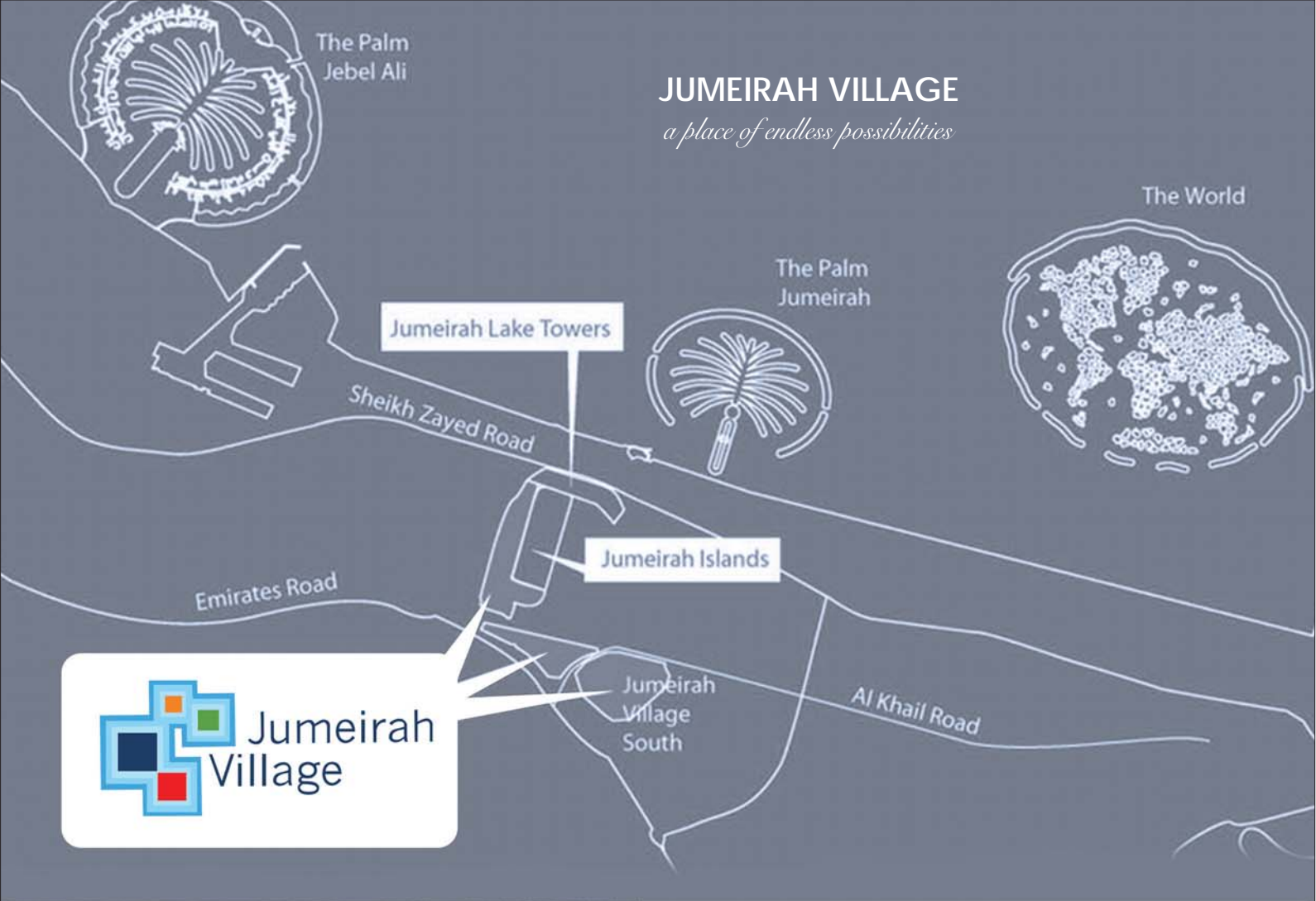


Floor Plan

layouts



NOTE:
All dimensions and drawings are approximate. Materials and furniture are for illustrative purpose only. Information is subject to change without notice. Actual usable floor space may vary from the stated floor plan. Drawings are not to the scale. The developers reserves the right to make revision to floor plans



JUMEIRAH VILLAGE

a place of endless possibilities



MASAAR RESIDENCE

location

Masaar Residence, is located in Jumeriah Village South Circle (JV), Dubai, on plot JVC 15 TMRP 004, contained of 1 basement, ground floor and 4 residential floors with total 97 flats of studio, one and two bedrooms.

The JV community is close vicinity to Dubai sports city, Arabian Ranches, Meadows, Jumeirah Islands, Golf Estate resort and Discovery gardens. JV is envisaged to be a very vibrant community that will cater to different lifestyles and tastes.

Developer



KHAMAS

Benefit from our Experience

Developer Representative

Kuwait

Bahrain


BUNIAH
when things make sense

T : +9714 34 17 775
F : +9714 34 17 175
E : info@buniah.com
W : www.buniah.com


TOP REAL ESTATE
Marketing & Consultancy

T : +965 257 57 871/2/3
F : +965 257 57 874
E : info@toprealestategroup.com
W : www.toprealestategroup.com


UTOPIA Properties

T : +973 17 21 0004
F : +973 17 20 0046
E : info@utopiapropertiesgroup.com
W : www.utopiapropertiesgroup.com