

Oxley  
Gardens  
Milton Keynes

## The Barnstone

3 bedroom home



Agent in Kuwait

Agent in Qatar

Please note, floor plans and dimensions are taken from architectural drawings and are for guidance only. Dimensions stated are within a tolerance of plus or minus 50mm. Overall dimensions are usually stated and there may be projections into these. With our continual improvement policy we constantly review our designs and specification to ensure we deliver the best product to our customers. Computer generated images not to scale. Finishes and materials may vary and landscaping is illustrative only. Kitchen layouts are indicative only and may change. To confirm specific details on our homes please ask your Sales Executive. October 2016.

Linden  
HOMES

مجموعة توب العقارية  
TOP REAL ESTATE  
Marketing & Consultancy

يوتوبيا للعقارات  
UTOPIA Properties

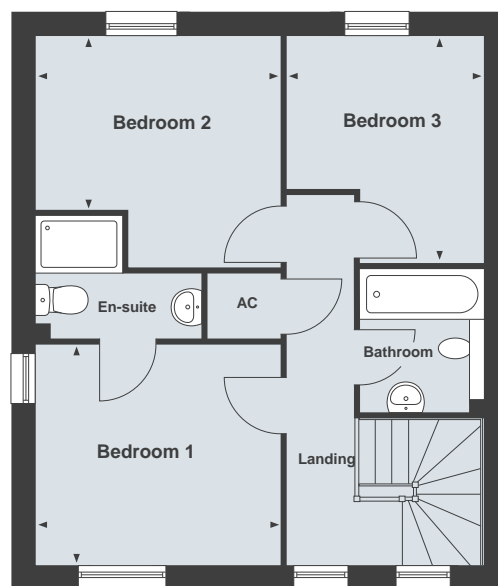
## The Barnstone

3 bedroom home



### Ground Floor

Living Room	5140 x 3570mm	16'10" x 11'8"
Kitchen/Dining Room	7325 x 2480mm	24'0" x 8'1"



### First Floor

Bedroom 1	3370 x 3080mm	11'0" x 10'1"
Bedroom 2*	3370 x 2355mm	11'0" x 7'8"
Bedroom 3*	3115 x 2730mm	10'2" x 8'11"

Total Internal Area 92.3 sq m 993 sq ft

\*Denotes irregularly shaped room,  
refer to floor plans for details.

Agent in Kuwait

Agent in Qatar



—  
**Oxley  
Gardens**  
Milton Keynes  
—

## The Casterton

4 bedroom home



Agent in Kuwait

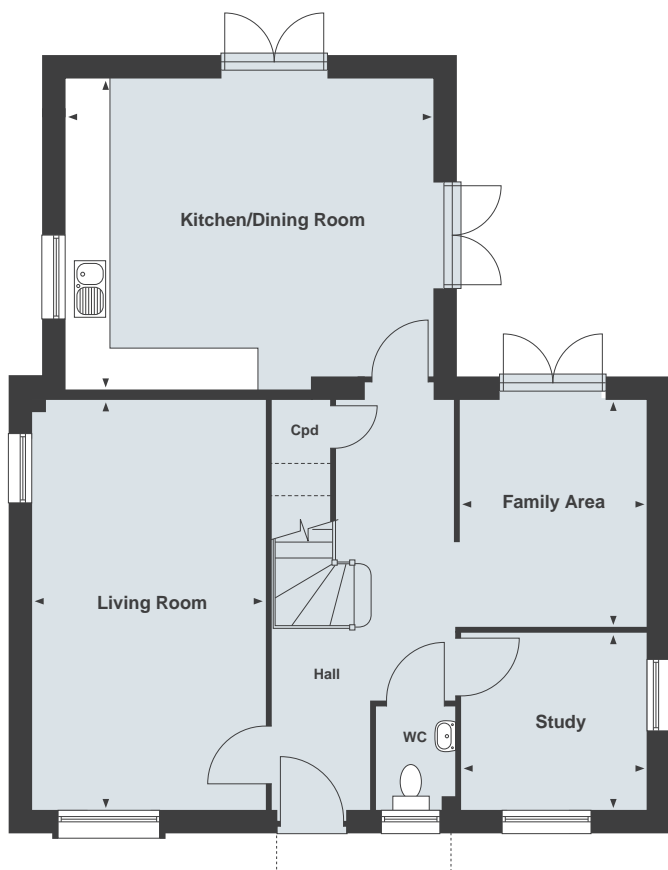
Agent in Qatar

Please note, floor plans and dimensions are taken from architectural drawings and are for guidance only. Dimensions stated are within a tolerance of plus or minus 50mm. Overall dimensions are usually stated and there may be projections into these. With our continual improvement policy we constantly review our designs and specification to ensure we deliver the best product to our customers. Computer generated images not to scale. Finishes and materials may vary and landscaping is illustrative only. Kitchen layouts are indicative only and may change. To confirm specific details on our homes please ask your Sales Executive. October 2016.

  
**Linden**  
HOMES

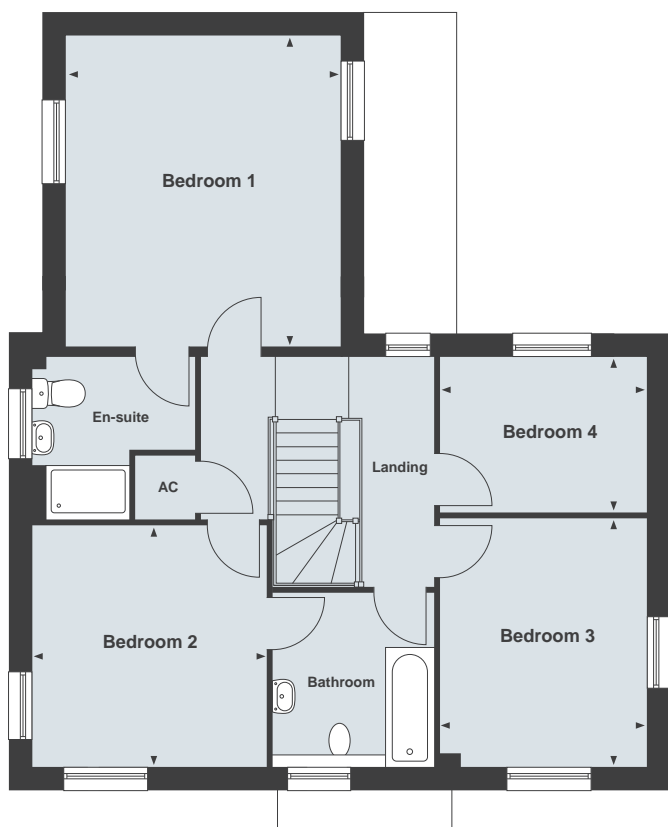
 مجموعة توب العقارية  
**TOP REAL ESTATE**  
Marketing & Consultancy

 يوتوبيا للعقارات  
**UTOPIA** Properties



#### Ground Floor

Living Room	
5865 x 3320mm	19'2" x 10'10"
Kitchen/Dining Room	
5300 x 4460mm	17'4" x 14'7"
Family Area	
3245 x 2630mm	10'7" x 8'7"
Study	
2630 x 2515mm	8'7" x 8'3"



#### First Floor

Bedroom 1	
4500 x 3960mm	14'9" x 12'11"
Bedroom 2	
3435 x 3320mm	11'3" x 10'10"
Bedroom 3	
3555 x 2965mm	11'7" x 9'8"
Bedroom 4	
2965 x 2205mm	9'8" x 7'2"

Total Internal Area 147.1 sq m 1591 sq ft

Agent in Kuwait

Agent in Qatar



Oxley  
Gardens  
Milton Keynes

## The Deeping

4 bedroom home



Agent in Kuwait

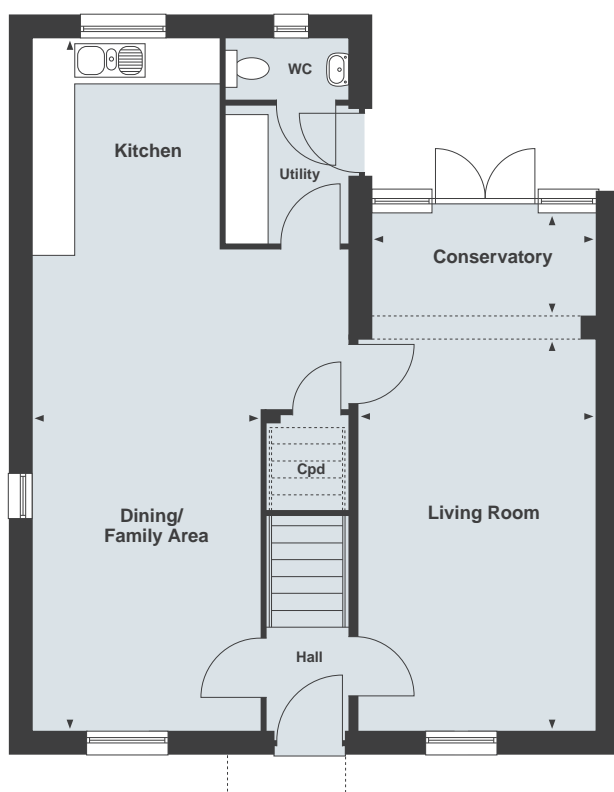
Agent in Qatar

Please note, floor plans and dimensions are taken from architectural drawings and are for guidance only. Dimensions stated are within a tolerance of plus or minus 50mm. Overall dimensions are usually stated and there may be projections into these. With our continual improvement policy we constantly review our designs and specification to ensure we deliver the best product to our customers. Computer generated images not to scale. Finishes and materials may vary and landscaping is illustrative only. Kitchen layouts are indicative only and may change. To confirm specific details on our homes please ask your Sales Executive. October 2016.

  
**Linden**  
HOMES

 مجموعة توب العقارية  
**TOP REAL ESTATE**  
Marketing & Consultancy

 يوتوبيا للعقارات  
**UTOPIA** Properties



#### Ground Floor

##### Dining/Family Area/Kitchen\*

9730 x 3195mm 31'11" x 10'5"

Living Room 5490 x 3335mm 18'0" x 10'11"

Conservatory 3135 x 1410mm 10'3" x 4'7"



#### First Floor

##### Bedroom 1

4445 x 3665mm 14'7" x 12'0"

Bedroom 2\* 4445 x 2685mm 14'7" x 8'9"

Bedroom 3\* 3385 x 2690mm 11'1" x 8'9"

Bedroom 4 2700 x 2295mm 8'10" x 7'6"

Total Internal Area 132.2 sq m 1423 sq ft

\*Denotes irregularly shaped room,  
refer to floor plans for details.

Agent in Kuwait

Agent in Qatar



Oxley  
Gardens  
Milton Keynes

## The Essendine

3 bedroom home



Agent in Kuwait

Agent in Qatar

Please note, floor plans and dimensions are taken from architectural drawings and are for guidance only. Dimensions stated are within a tolerance of plus or minus 50mm. Overall dimensions are usually stated and there may be projections into these. With our continual improvement policy we constantly review our designs and specification to ensure we deliver the best product to our customers. Computer generated images not to scale. Finishes and materials may vary and landscaping is illustrative only. Kitchen layouts are indicative only and may change. To confirm specific details on our homes please ask your Sales Executive. October 2016.

  
**Linden**  
HOMES

 مجموعة توب العقارية  
**TOP REAL ESTATE**  
Marketing & Consultancy

 يوتوبيا للعقارات  
**UTOPIA** Properties

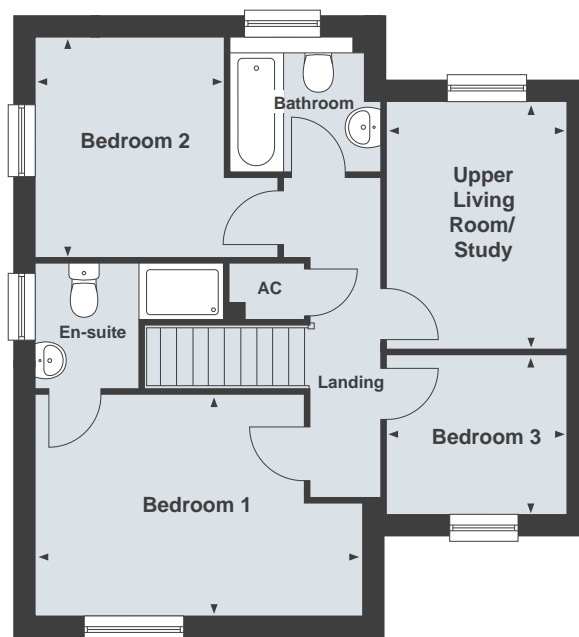
## The Essendine

3 bedroom home



### Ground Floor

Kitchen/Dining Area*	
4670 x 2870mm	15'3" x 9'5"
Living Room	
4670 x 3135mm	15'3" x 10'3"



### First Floor

Upper Living Room/Study	
3550 x 2575mm	11'7" x 8'5"
Bedroom 1*	
4670 x 3135mm	15'3" x 10'3"
Bedroom 2*	
3100 x 2750mm	10'2" x 9'0"
Bedroom 3	
2575 x 2260mm	8'5" x 7'5"

Total Internal Area 95.9 sq m 1033 sq ft

\*Denotes irregularly shaped room,  
refer to floor plans for details.

Agent in Kuwait

Agent in Qatar



Oxley  
Gardens  
Milton Keynes

## The Exton

4 bedroom home



Agent in Kuwait

Agent in Qatar

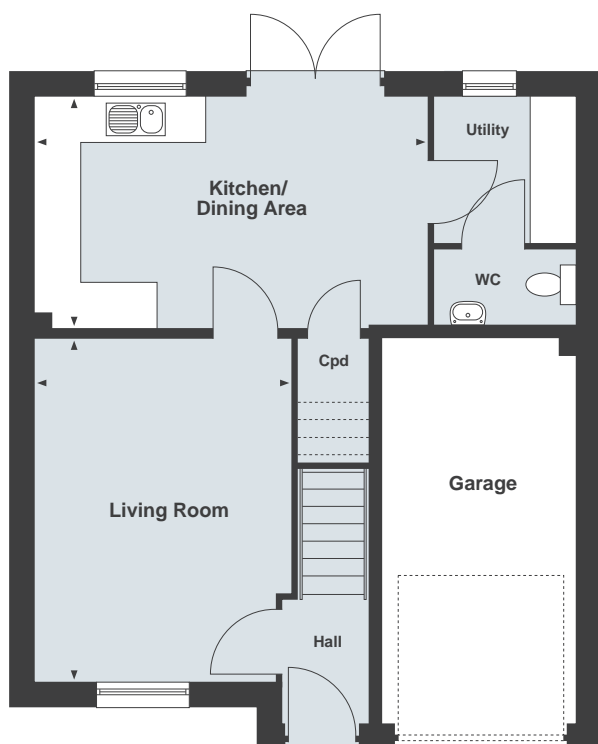
Please note, floor plans and dimensions are taken from architectural drawings and are for guidance only. Dimensions stated are within a tolerance of plus or minus 50mm. Overall dimensions are usually stated and there may be projections into these. With our continual improvement policy we constantly review our designs and specification to ensure we deliver the best product to our customers. Computer generated images not to scale. Finishes and materials may vary and landscaping is illustrative only. Kitchen layouts are indicative only and may change. To confirm specific details on our homes please ask your Sales Executive. October 2016.

مجموعة توب العقارية  
TOP REAL ESTATE  
Marketing & Consultancy

يوتوبيا للعقارات  
UTOPIA Properties

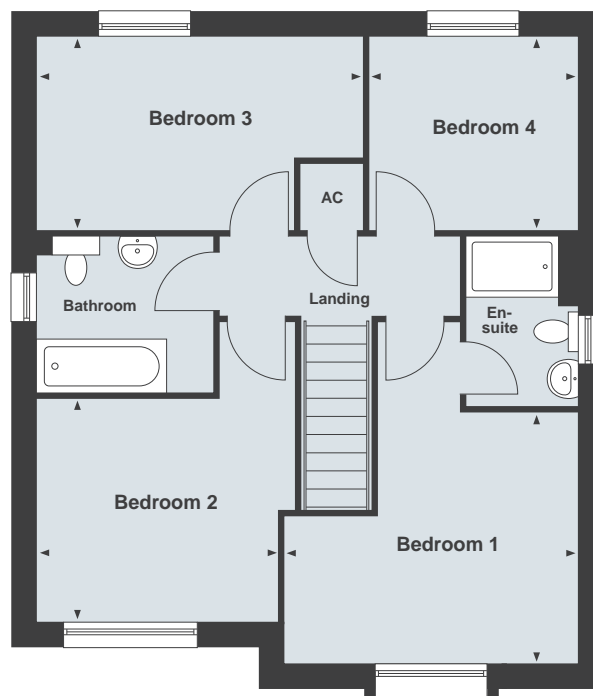
Linden  
HOMES

## The Exton 4 bedroom home



### Ground Floor

Living Room*	
4485 x 3345mm	14'8" x 10'11"
Kitchen/Dining Area	
5145 x 3025mm	16'10" x 9'11"



### First Floor

Bedroom 1*	
3830 x 3280mm	12'6" x 10'9"
Bedroom 2*	
3150 x 2905mm	10'4" x 9'6"
Bedroom 3*	
4255 x 2515mm	13'11" x 8'3"
Bedroom 4	
2740 x 2515mm	8'11" x 8'3"

Total Internal Area 100.1 sq m 1078 sq ft

\*Denotes irregularly shaped room,  
refer to floor plans for details.

Agent in Kuwait

Agent in Qatar



Oxley  
Gardens  
Milton Keynes

## The Greetham

3 bedroom home



Agent in Kuwait

Agent in Qatar

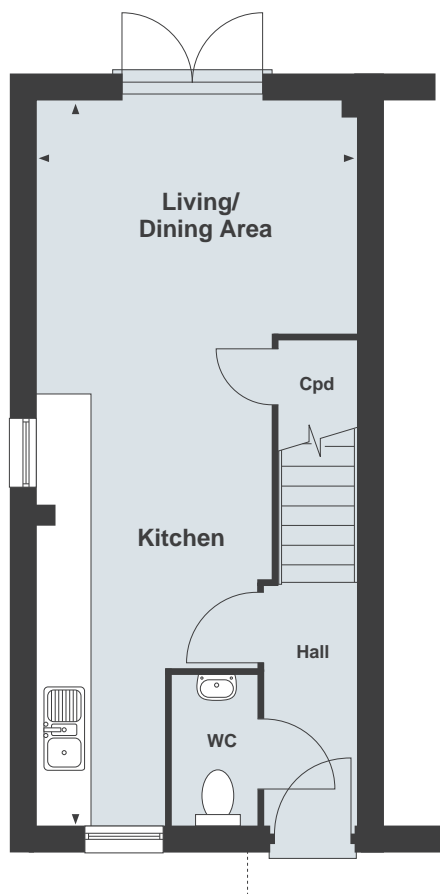
Please note, floor plans and dimensions are taken from architectural drawings and are for guidance only. Dimensions stated are within a tolerance of plus or minus 50mm. Overall dimensions are usually stated and there may be projections into these. With our continual improvement policy we constantly review our designs and specification to ensure we deliver the best product to our customers. Computer generated images not to scale. Finishes and materials may vary and landscaping is illustrative only. Kitchen layouts are indicative only and may change. To confirm specific details on our homes please ask your Sales Executive. October 2016.

  
**Linden**  
HOMES

 مجموعة توب العقارية  
**TOP REAL ESTATE**  
Marketing & Consultancy

 يوتوبيا للعقارات  
**UTOPIA** Properties

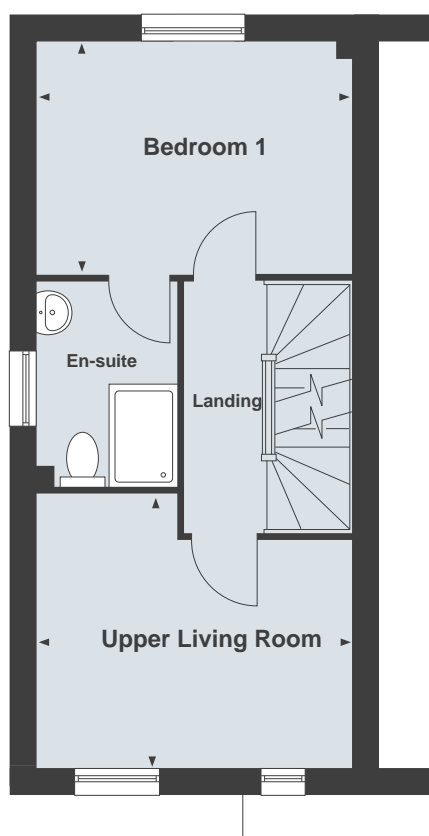




#### Ground Floor

Living/Dining Area/Kitchen\*

8510 x 3715mm 27'11" x 12'2"



#### First Floor

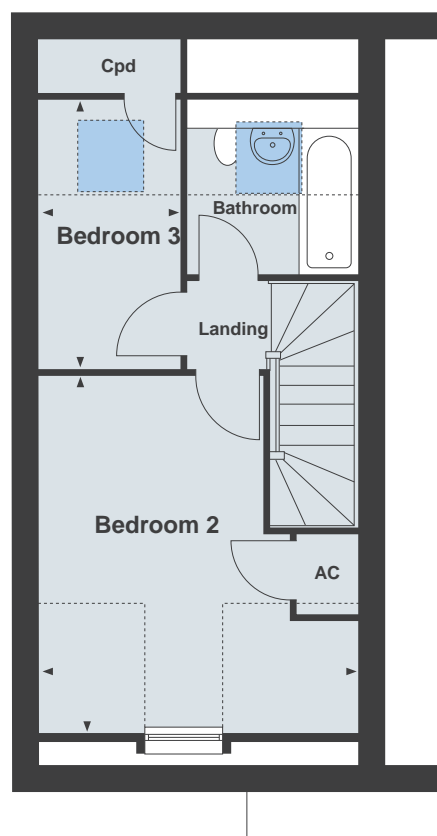
Bedroom 1

3715 x 2700mm 12'2" x 8'10"

Upper Living Room\*

3715 x 3195mm 12'2" x 10'5"

--- Restricted ceiling height  
Velux window locations



#### Second Floor

Bedroom 2\*

4210 x 3715mm 13'9" x 12'2"

Bedroom 3

3175 x 1640mm 10'5" x 5'4"

Total Internal Area 92.1 sq m 1001 sq ft

\*Denotes irregularly shaped room,  
refer to floor plans for details.

Agent in Kuwait

Agent in Qatar

—  
**Oxley  
Gardens**  
Milton Keynes  
—

## The Haddon

3 bedroom home



Agent in Kuwait

Agent in Qatar

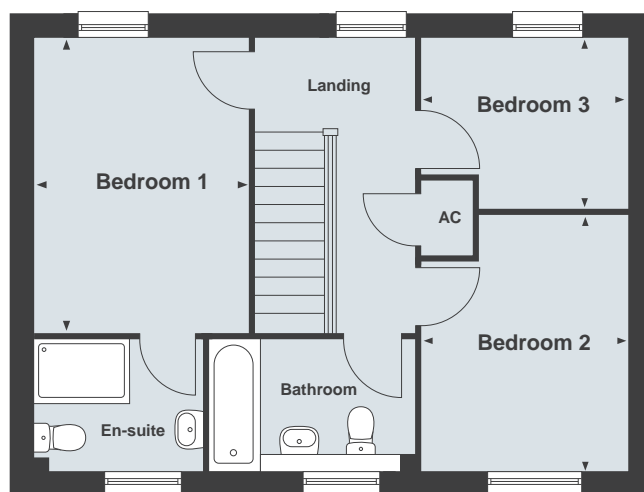
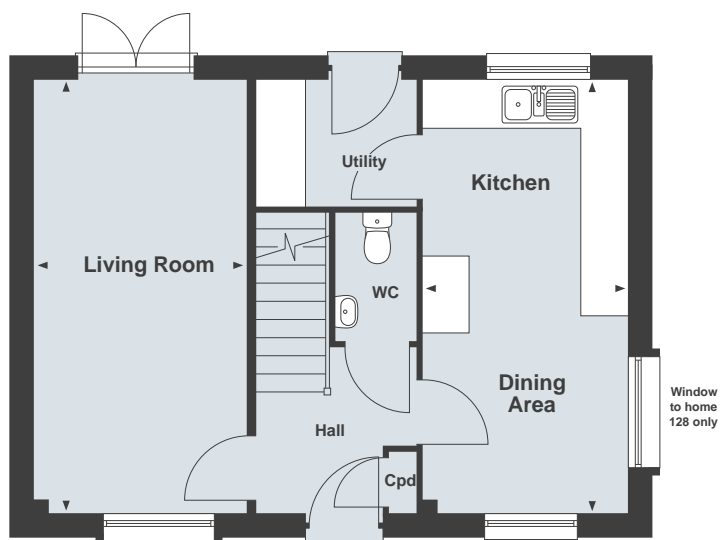
Please note, floor plans and dimensions are taken from architectural drawings and are for guidance only. Dimensions stated are within a tolerance of plus or minus 50mm. Overall dimensions are usually stated and there may be projections into these. With our continual improvement policy we constantly review our designs and specification to ensure we deliver the best product to our customers. Computer generated images not to scale. Finishes and materials may vary and landscaping is illustrative only. Kitchen layouts are indicative only and may change. To confirm specific details on our homes please ask your Sales Executive. October 2016.

 مجموعة توب العقارية  
**TOP REAL ESTATE**  
Marketing & Consultancy

 يوتوبيا للعقارات  
**UTOPIA** Properties

  
**Linden**  
HOMES

## The Haddon 3 bedroom home



### Ground Floor

Living Room	5580 x 2715mm	18'3" x 8'10"
Kitchen/Dining Area	5580 x 2610mm	18'3" x 8'6"

### First Floor

Bedroom 1	3780 x 2765mm	12'4" x 9'0"
Bedroom 2*	3310 x 2630mm	10'10" x 8'7"
Bedroom 3*	2630 x 2160mm	8'7" x 7'1"

Total Internal Area 86.9 sq m 935 sq ft

\*Denotes irregularly shaped room,  
refer to floor plans for details.

Agent in Kuwait

Agent in Qatar



Oxley  
Gardens  
Milton Keynes

## The Shelford

5 bedroom home



Agent in Kuwait

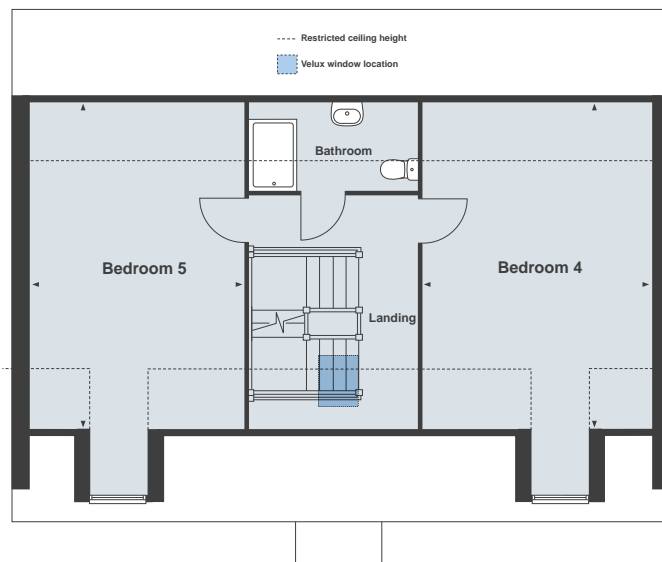
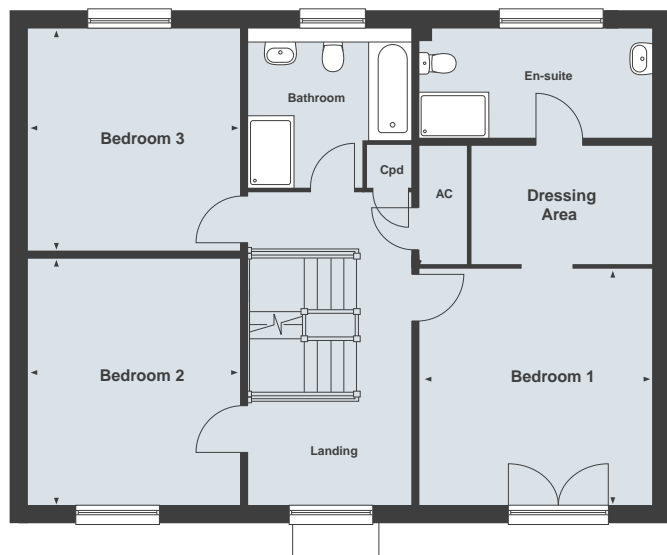
Agent in Qatar

Please note, floor plans and dimensions are taken from architectural drawings and are for guidance only. Dimensions stated are within a tolerance of plus or minus 50mm. Overall dimensions are usually stated and there may be projections into these. With our continual improvement policy we constantly review our designs and specification to ensure we deliver the best product to our customers. Computer generated images not to scale. Finishes and materials may vary and landscaping is illustrative only. Kitchen layouts are indicative only and may change. To confirm specific details on our homes please ask your Sales Executive. October 2016.

Linden  
HOMES

مجموعة توب العقارية  
TOP REAL ESTATE  
Marketing & Consultancy

يوتوبيا للعقارات  
UTOPIA Properties



#### Second Floor

Bedroom 4*	18'10" x 13'1"
5760 x 3990mm	
Bedroom 5*	18'10" x 12'1"
5760 x 3690mm	

#### First Floor

Bedroom 1	13'4" x 13'1"
4080 x 4000mm	
Bedroom 2	14'0" x 12'1"
4285 x 3690mm	
Bedroom 3	12'7" x 12'0"
3855 x 3675mm	

#### Ground Floor

Kitchen/Breakfast/Dining Area	35'4" x 12'4"
10785 x 3775mm	
Living Room	14'2" x 12'11"
4320 x 3950mm	
Study	11'11" x 8'4"
3650 x 2560mm	

Total Internal Area 244.8 sq m 2635 sq ft

\*Denotes irregularly shaped room, refer to floor plans for details.



—  
**Oxley  
Gardens**  
Milton Keynes  
—

## The Milton

5 bedroom home



Agent in Kuwait

Agent in Qatar

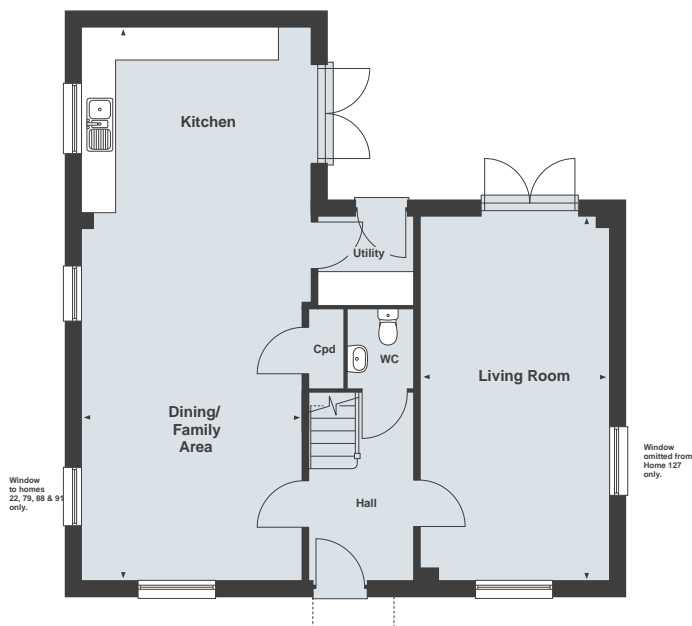
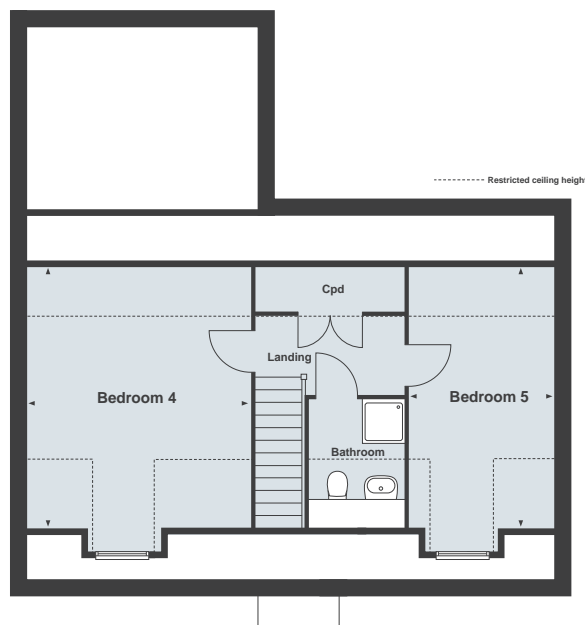
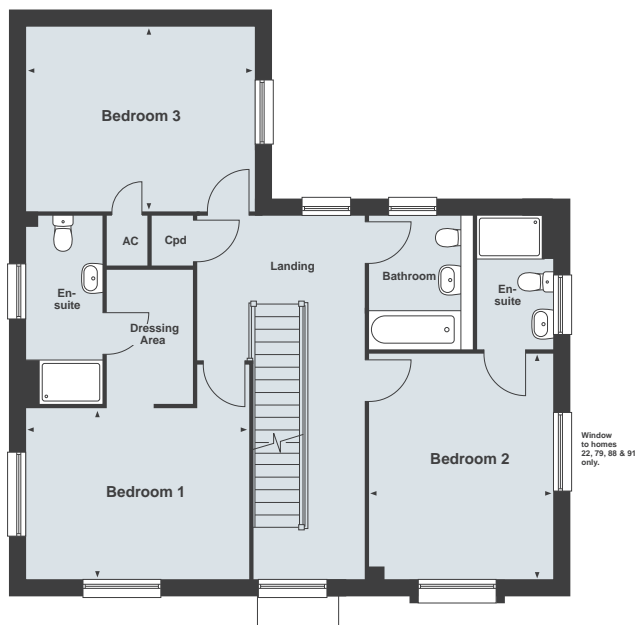
Please note, floor plans and dimensions are taken from architectural drawings and are for guidance only. Dimensions stated are within a tolerance of plus or minus 50mm. Overall dimensions are usually stated and there may be projections into these. With our continual improvement policy we constantly review our designs and specification to ensure we deliver the best product to our customers. Computer generated images not to scale. Finishes and materials may vary and landscaping is illustrative only. Kitchen layouts are indicative only and may change. To confirm specific details on our homes please ask your Sales Executive. October 2016.

مجموعة توب العقارية  
**TOP REAL ESTATE**  
Marketing & Consultancy

يوتوبيا للعقارات  
**UTOPIA** Properties

  
**Linden**  
HOMES





## Second Floor

<b>Bedroom 4*</b>	
4800 x 4090mm	15'9" x 13'5"
<b>Bedroom 5*</b>	
4800 x 2665mm	15'9" x 8'8"

## First Floor

<b>Bedroom 1*</b>	
4090 x 3110mm	13'5" x 10'2"
<b>Bedroom 2</b>	
4115 x 3385mm	13'6" x 11'1"
<b>Bedroom 3</b>	
4210 x 3390mm	13'9" x 11'1"

## Ground Floor

<b>Living Room</b>	
6670 x 3460mm	21'10" x 11'4"
<b>Kitchen/Dining/Family Area*</b>	
10170 x 4045mm	33'4" x 13'3"

Total Internal Area 209.7 sq m 2257 sq ft

\*Denotes irregularly shaped room, refer to floor plans for details.

—  
**Oxley  
Gardens**  
Milton Keynes  
—

## The Pilsgate

4 bedroom home



Agent in Kuwait

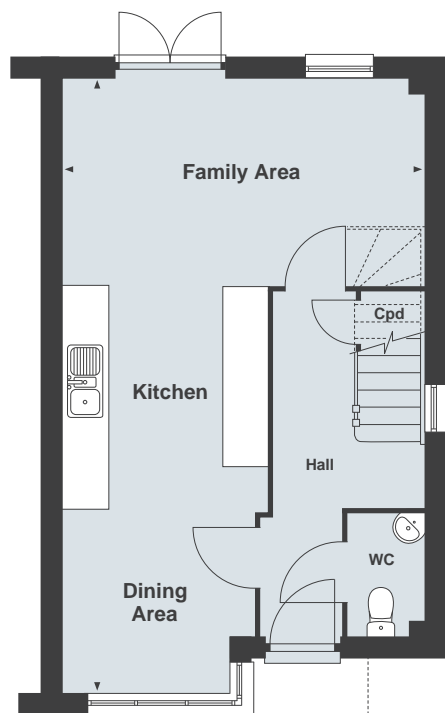
Agent in Qatar

Please note, floor plans and dimensions are taken from architectural drawings and are for guidance only. Dimensions stated are within a tolerance of plus or minus 50mm. Overall dimensions are usually stated and there may be projections into these. With our continual improvement policy we constantly review our designs and specification to ensure we deliver the best product to our customers. Computer generated images not to scale. Finishes and materials may vary and landscaping is illustrative only. Kitchen layouts are indicative only and may change. To confirm specific details on our homes please ask your Sales Executive. October 2016.

 مجموعة توب العقارية  
**TOP REAL ESTATE**  
Marketing & Consultancy

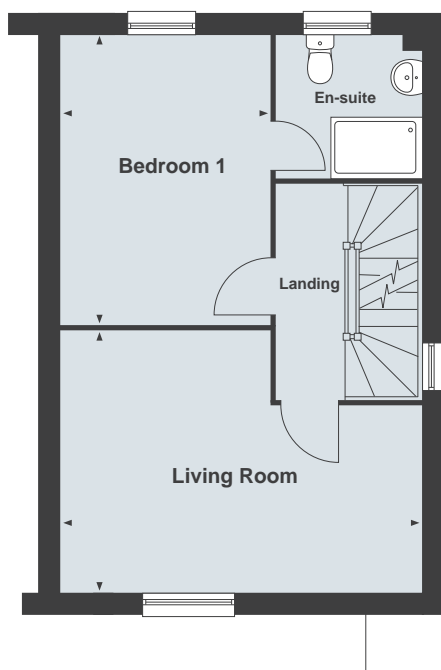
 يوتوبيا للعقارات  
**UTOPIA** Properties

  
**Linden**  
HOMES



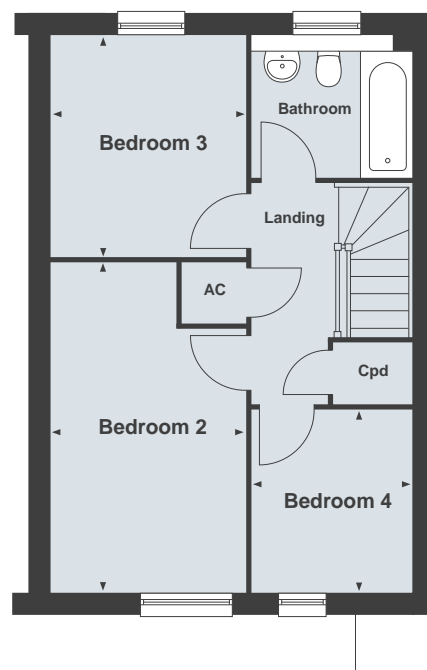
#### Ground Floor

Family Area/Kitchen/Dining Area\*  
8270 x 4840mm 27'1" x 15'10"



#### First Floor

Bedroom 1  
3875 x 2795mm 12'8" x 9'2"  
Living Room\*  
4840 x 3505mm 15'10" x 11'6"



#### Second Floor

Bedroom 2\*  
4430 x 2580mm 14'6" x 8'5"  
Bedroom 3  
2950 x 2580mm 9'8" x 8'5"  
Bedroom 4  
2455 x 2160mm 8'0" x 7'1"

Total Internal Area 112.4 sq m 1210 sq ft

\*Denotes irregularly shaped room,  
refer to floor plans for details.

Agent in Kuwait

Agent in Qatar

Please note, floor plans and dimensions are taken from architectural drawings and are for guidance only. Dimensions stated are within a tolerance of plus or minus 50mm. Overall dimensions are usually stated and there may be projections into these. With our continual improvement policy we constantly review our designs and specification to ensure we deliver the best product to our customers. Computer generated images not to scale. Finishes and materials may vary and landscaping is illustrative only. Kitchen layouts are indicative only and may change. To confirm specific details on our homes please ask your Sales Executive. October 2016.

**Linden**  
HOMES



Oxley  
Gardens  
Milton Keynes

## The Shelton

3 bedroom home



Agent in Kuwait

Agent in Qatar

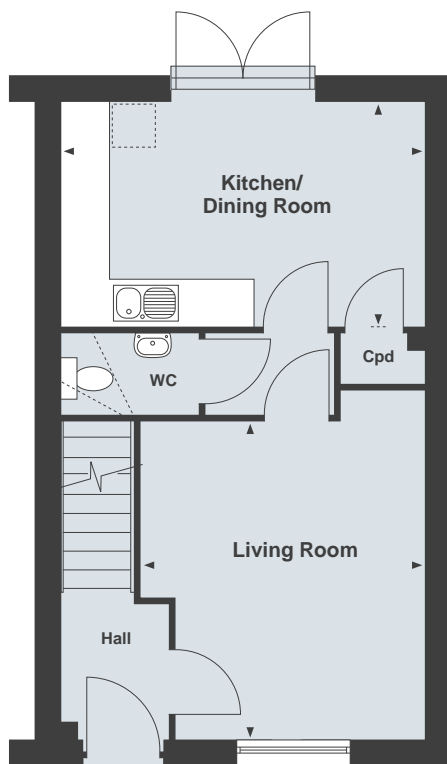
Please note, floor plans and dimensions are taken from architectural drawings and are for guidance only. Dimensions stated are within a tolerance of plus or minus 50mm. Overall dimensions are usually stated and there may be projections into these. With our continual improvement policy we constantly review our designs and specification to ensure we deliver the best product to our customers. Computer generated images not to scale. Finishes and materials may vary and landscaping is illustrative only. Kitchen layouts are indicative only and may change. To confirm specific details on our homes please ask your Sales Executive. October 2016.

مجموعة توب العقارية  
TOP REAL ESTATE  
Marketing & Consultancy

يوتوبيا للعقارات  
UTOPIA Properties

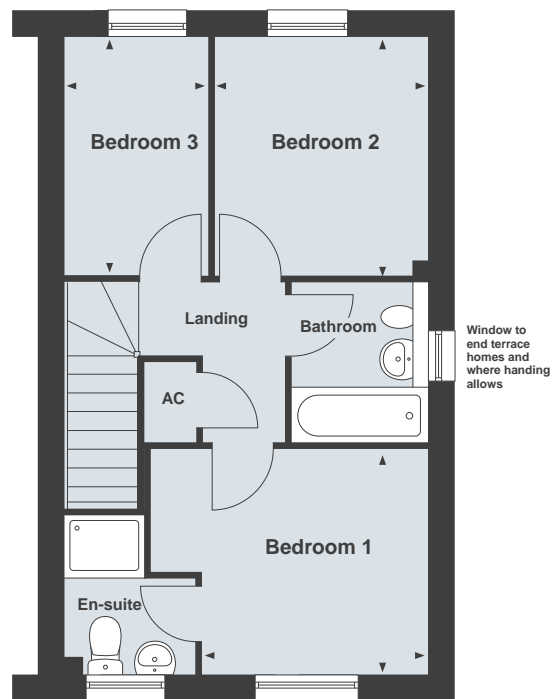
Linden  
HOMES

## The Shelton 3 bedroom home



### Ground Floor

<b>Living Room*</b>	
3945 x 3540mm	13'0" x 11'8"
<b>Kitchen/Dining Room</b>	
4560 x 2800mm	14'11" x 9'3"



### First Floor

<b>Bedroom 1*</b>	
2810 x 2810mm	9'3" x 9'3"
<b>Bedroom 2</b>	
3000 x 2680mm	9'10" x 8'9"
<b>Bedroom 3</b>	
3000 x 1775mm	9'10" x 5'11"

Total Internal Area 74.3 sq m 799 sq ft

\*Denotes irregularly shaped room,  
refer to floor plans for details.

Agent in Kuwait

Agent in Qatar



Oxley  
Gardens  
Milton Keynes

## The Tolethorpe

4 bedroom home



Agent in Kuwait

Agent in Qatar

Please note, floor plans and dimensions are taken from architectural drawings and are for guidance only. Dimensions stated are within a tolerance of plus or minus 50mm. Overall dimensions are usually stated and there may be projections into these. With our continual improvement policy we constantly review our designs and specification to ensure we deliver the best product to our customers. Computer generated images not to scale. Finishes and materials may vary and landscaping is illustrative only. Kitchen layouts are indicative only and may change. To confirm specific details on our homes please ask your Sales Executive. October 2016.

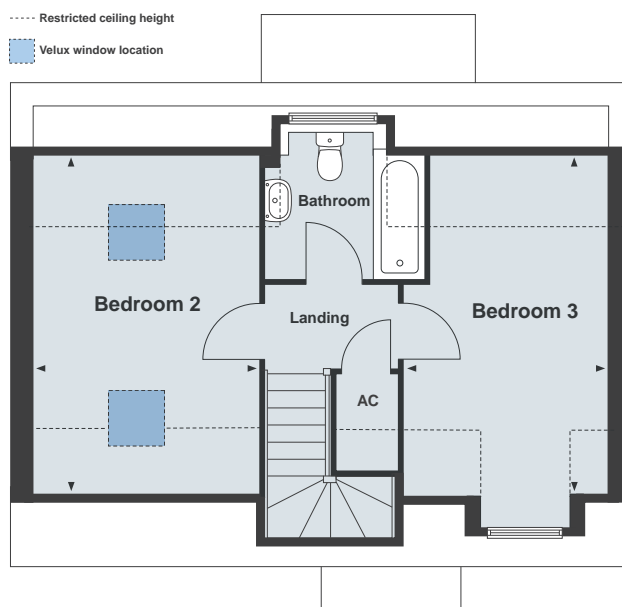
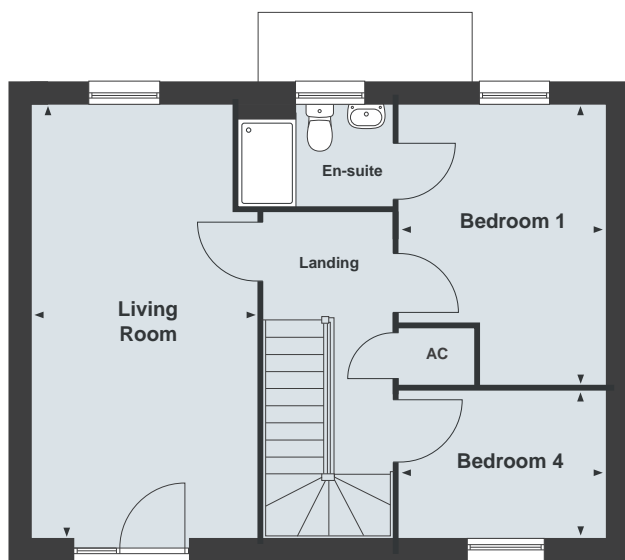
Linden  
HOMES

مجموعة توب العقارية  
TOP REAL ESTATE  
Marketing & Consultancy

يوتوبيا للعقارات  
UTOPIA Properties



## The Tolethorpe 4 bedroom home



### Second Floor

Bedroom 2	
4600 x 3050mm	15'1" x 10'0"
Bedroom 3*	
4600 x 2770mm	15'1" x 9'1"

### First Floor

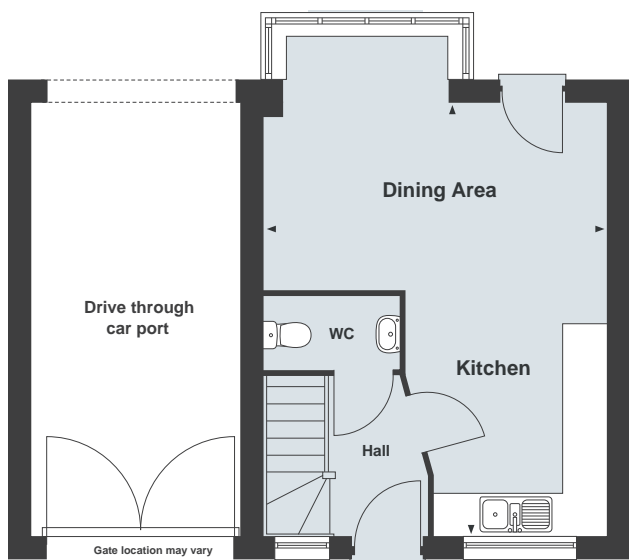
Living Room*	
5910 x 3050mm	19'4" x 10'0"
Bedroom 1*	
3820 x 2805mm	12'6" x 9'2"
Bedroom 4	
2805 x 1990mm	9'2" x 6'6"

### Ground Floor

Kitchen/Dining Area*	
5910 x 4670mm	19'4" x 15'3"

Total Internal Area 116.1 sq m 1250 sq ft

\*Denotes irregularly shaped room, refer to floor plans for details.



Agent in Kuwait

Agent in Qatar

Oxley  
Gardens  
Milton Keynes

## The Winslow

3 bedroom home



Agent in Kuwait

Agent in Qatar

Please note, floor plans and dimensions are taken from architectural drawings and are for guidance only. Dimensions stated are within a tolerance of plus or minus 50mm. Overall dimensions are usually stated and there may be projections into these. With our continual improvement policy we constantly review our designs and specification to ensure we deliver the best product to our customers. Computer generated images not to scale. Finishes and materials may vary and landscaping is illustrative only. Kitchen layouts are indicative only and may change. To confirm specific details on our homes please ask your Sales Executive. October 2016.

  
**Linden**  
HOMES

 مجموعة توب العقارية  
**TOP REAL ESTATE**  
Marketing & Consultancy

 يوتوبيا للعقارات  
**UTOPIA** Properties

## The Winslow 3 bedroom home



### First Floor

<b>Bedroom 1</b>	
3610 x 2990mm	11'10" x 9'9"
<b>Bedroom 2</b>	
3410 x 2825mm	11'2" x 9'3"
<b>Bedroom 3</b>	
4650 x 1900mm	15'3" x 6'2"



### Ground Floor

<b>Living Room*</b>	
5415 x 2930mm	17'9" x 9'7"
<b>Kitchen/Dining Area</b>	
5415 x 3475mm	17'9" x 11'4"

Total Internal Area 92.4 sq m 995 sq ft

\*Denotes irregularly shaped room,  
refer to floor plans for details.

Agent in Kuwait

Agent in Qatar



Agent in Kuwait

Agent in Qatar

